

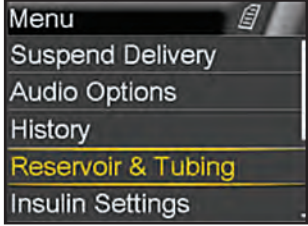
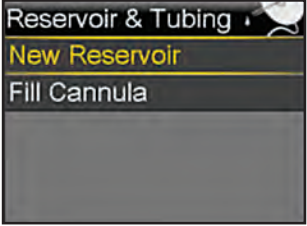
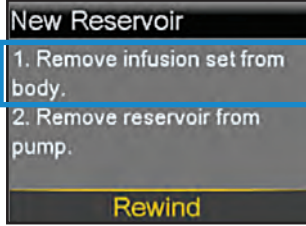
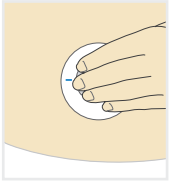
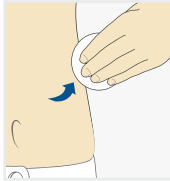


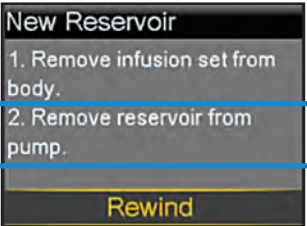
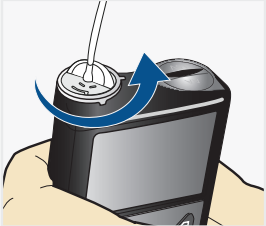
START HERE:

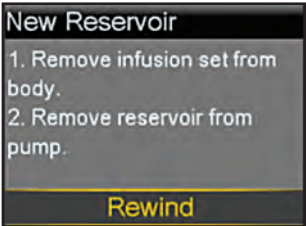
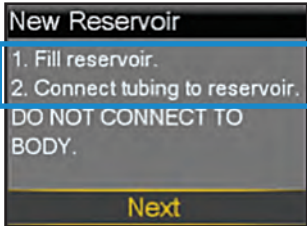
1.  Wash your hands. Press .

2.  Select **Reservoir & Tubing**.

3.  Select **New Reservoir**.

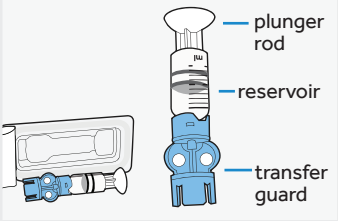
4.  Remove the infusion set you have been using by loosening the adhesive and pulling away from body.  

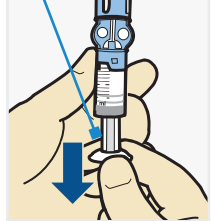
5.  Remove the used reservoir from the pump. 

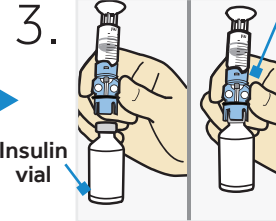
6.  Select **Rewind**. 

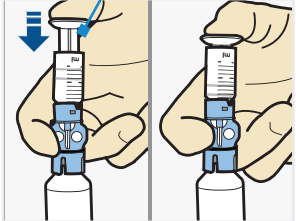
FILL RESERVOIR & CONNECT TO THE INFUSION SET TUBING

Follow the next steps to fill reservoir with insulin and connect to the infusion set tubing.

1.  Remove from package. Make sure insulin vial is at room temperature to reduce the risk of air bubbles.

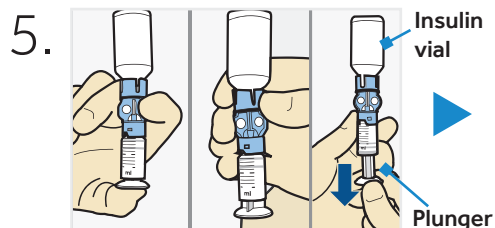
2.  Pull plunger down to the amount that you plan to fill with insulin.

3.  Wipe vial with alcohol. Place vial on table. Firmly press the blue transfer guard onto vial.

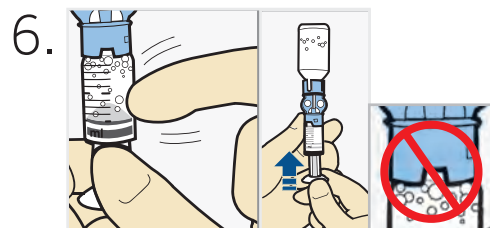
4.  Push and hold plunger down.

Continued on next page

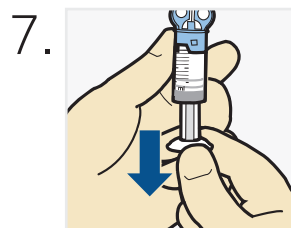
WARNING: Do not use the reservoir or infusion set if any liquid gets on the top of the reservoir or inside the tubing connector. Liquid can temporarily block the vents and may result in the delivery of too little or too much insulin, which can cause hyperglycemia or hypoglycemia.



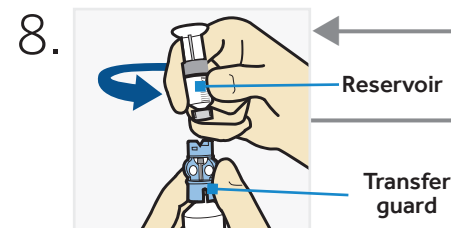
5. With your thumb still on the plunger, flip over so vial is on top. Release thumb and pull plunger down to fill with insulin.



6. Tap the reservoir to move air bubbles to top of reservoir. Push plunger up to move air into vial.



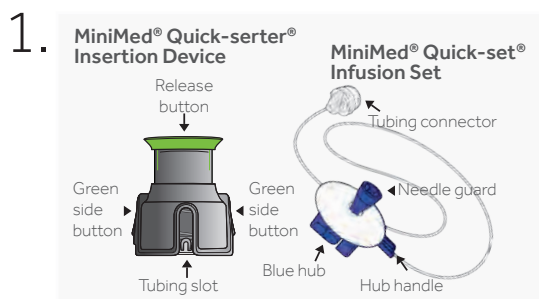
7. If needed, pull plunger back down to amount of insulin needed for 2-3 days.



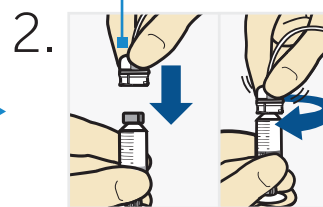
8. To avoid getting insulin on the top of the reservoir, turn vial over so it is upright. Hold transfer guard and turn reservoir counter-clockwise and remove from transfer guard.

CONNECT RESERVOIR TO INFUSION SET

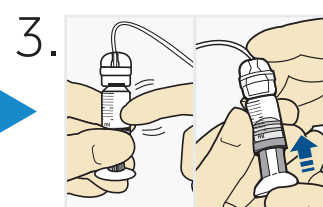
You will place the reservoir connector onto the end of the infusion set to the filled reservoir.



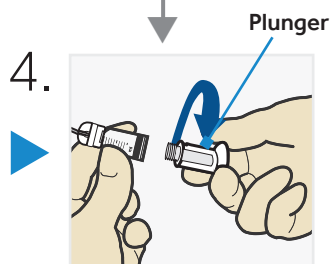
1. Remove infusion set from package. Remove the paper that holds the tubing together and unwind.



2. Gently push connector onto reservoir. Turn clockwise until locked. You will hear a click.



3. If you see air bubbles, tap reservoir to move them to top. Push plunger just a bit to move them into tubing.



4. Twist plunger counter-clockwise to loosen and remove.

THE BACKLIGHT MAY HAVE TURNED OFF

Press any button to turn the screen back on.



Select **Load Reservoir** and unlock pump if necessary.

New Reservoir

1. Fill reservoir.
2. Connect tubing to reservoir. DO NOT CONNECT TO BODY.

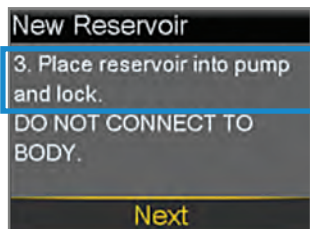
Next

Select **Next**.

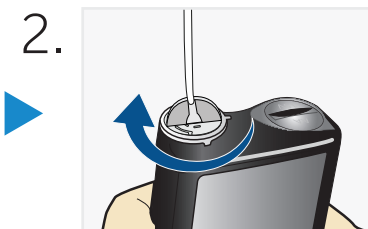
Continued on next page

PLACE RESERVOIR INTO PUMP

Now place the filled reservoir into the reservoir compartment of the pump.



1. Place reservoir into pump.



2. Turn clockwise until you feel reservoir lock into place.



3. Select **Next**

LOAD RESERVOIR AND FILL TUBING

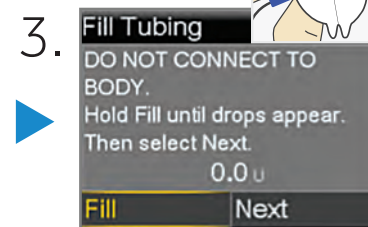
Follow these steps to load the reservoir and fill the tubing.



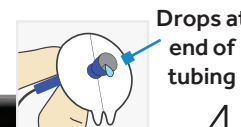
1. Select **Load** and keep holding .



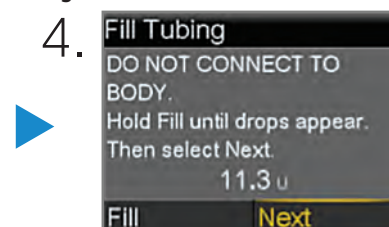
2. When you see this screen, select **Next**.



3. Select **Fill** and keep holding until you see drops at the end of tubing, then let go.



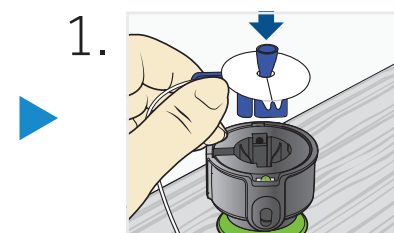
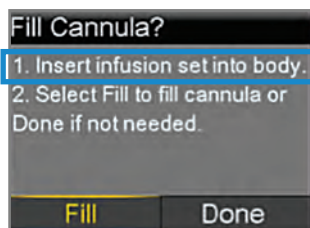
Drops at end of tubing



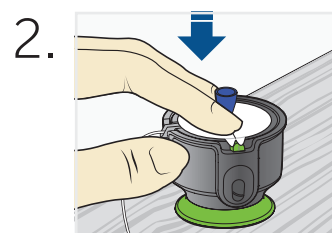
4. After you see drops, press and select **Next**.

INSERTING THE QUICK-SET INFUSION SET

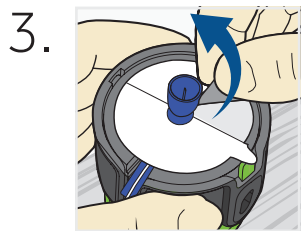
Next, follow the steps to insert the infusion set into your body.



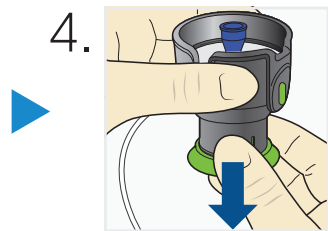
1. Place the MiniMed Quick-setter insertion device onto a sturdy flat surface with handle facing down. Place **blue** hub into serter, placing the handle in the tubing slot.



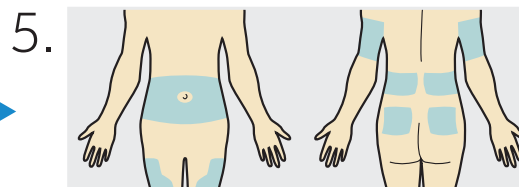
2. Use two fingers to seat the infusion set inside the serter securely and gently push down.



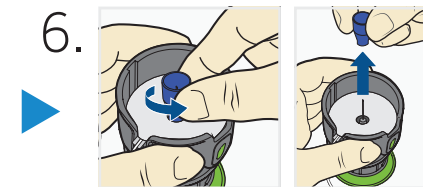
3. Peel the paper from the adhesive on both sides of the needle guard.



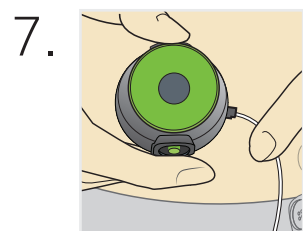
4. Pull **green** handle down until it clicks. The two **green** side buttons will also click into place. Do not press the **green** side buttons at this time.



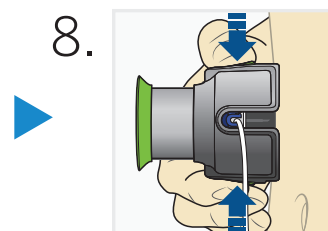
5. The best areas of the body to insert the infusion set are shown in the shaded areas of this drawing. Choose areas that are away from the natural bend of your waist or belt line of your pants. Avoid areas of hard or scar tissue. Consult with your healthcare provider on appropriate areas to insert your infusion set. Wipe with alcohol or other antiseptic.



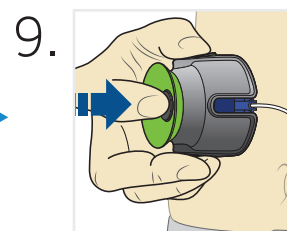
6. Turn to loosen needle guard and pull.



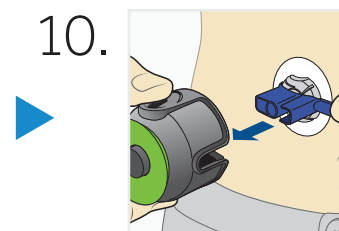
7. Hold inserter against cleaned site.



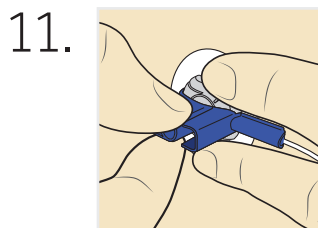
8. Press the two **green** side buttons at the same time. If they are not pressed at the same time the infusion set will not insert properly.



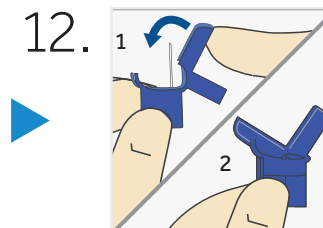
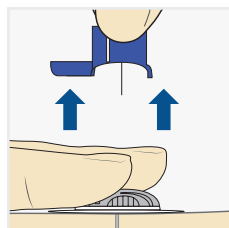
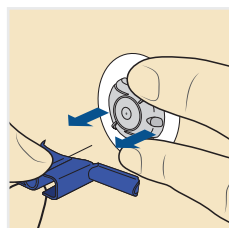
9. Press down the release button of the inserter to release the infusion set.



10. Pull inserter away from body. Press adhesive against skin.



11. Hold infusion set. Pull blue handle straight out to remove needle.

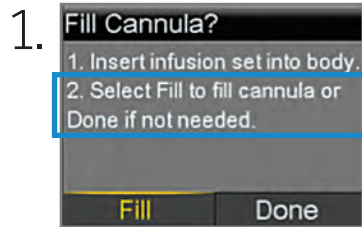


12. Fold blue handle until locked.

Dispose blue handle into a sharps container

FILL CANNULA

You will now fill the cannula, the little tube under your skin, with insulin.



Select **Fill**.



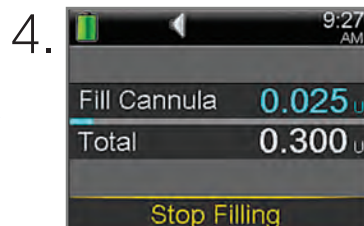
Select **Fill amount** and enter:
 - 0.300 if using 6mm cannula
 - 0.500 if using 9mm cannula
 Then press **Fill Now**.

Your pump will remember the **Fill amount** that you used last. Always verify that the Fill amount is correct.

- If it is correct, press **Fill Now** and press **Fill Now**.
- If it is incorrect, press **Fill amount**. Change to correct amount and. Press **Fill Now**.



Select **Fill Now**.



The Home screen displays the insulin as it fills the cannula.

Select **Stop Filling** if you need to stop, for example, if you notice the **Total** amount is incorrect. This should rarely happen if you have verified the **Fill amount** on the previous screen.

Your infusion set change is now complete!